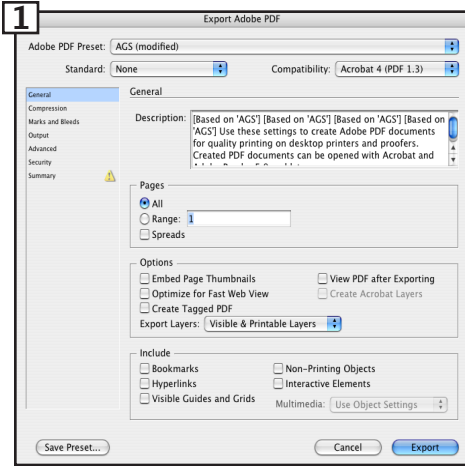
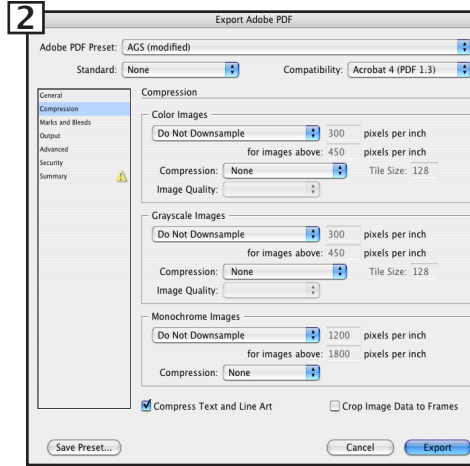


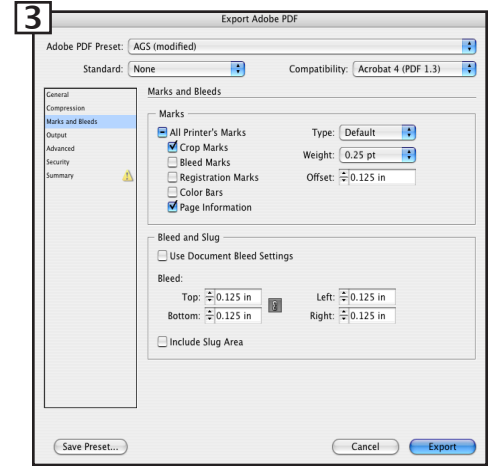
# INDESIGN-TO-PDF SPECS



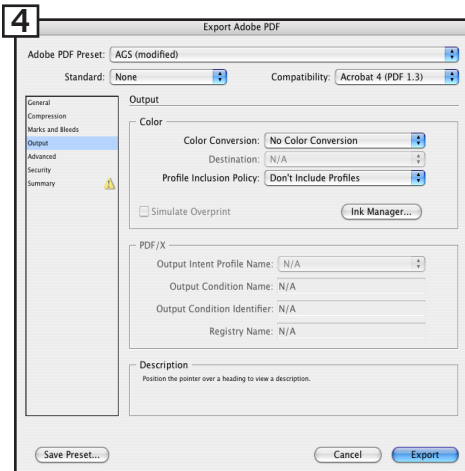
**General- Compatibility: Acrobat 4 if you want to flatten transparency; Acrobat 5 or higher to preserve transparency. All pages. Single Pages usually preferred over "Spreads"**



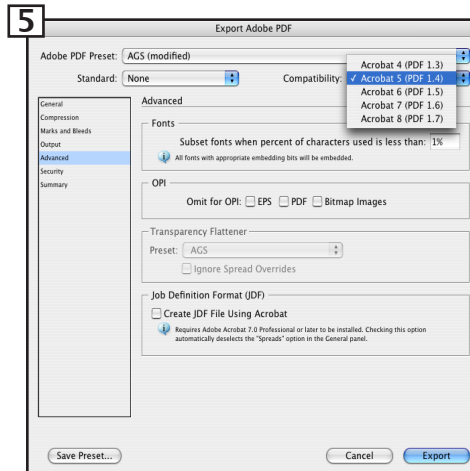
**Compression- No Downsampling or Compression to Images**  
\*If file size will be an issue, it is OK to downsample images, no less than 300dpi.



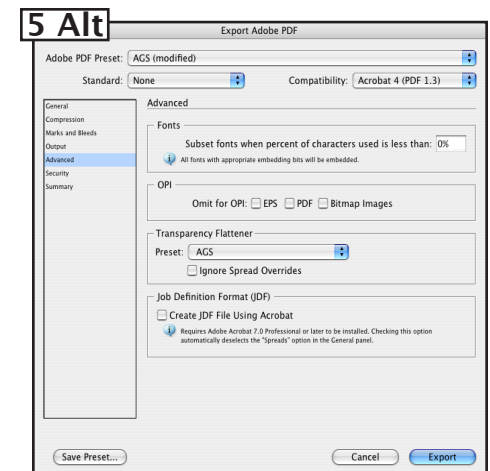
**Marks and Bleed- Trim Marks Only- \*Offset 1/8" or at least as much as bleed -Page Info for Reference -Bleeds should be 1/8"; more for saddlestitch books over 32 pages**



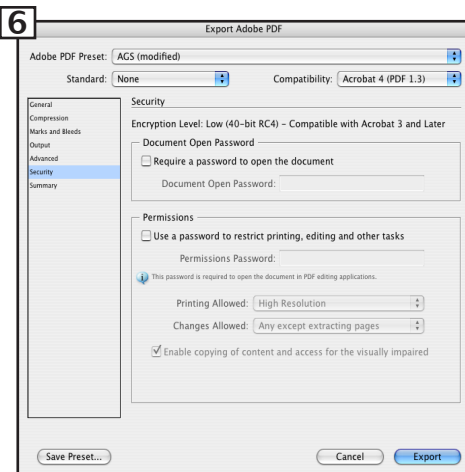
**Output- Pass the Color images through as supplied. \*\*Though we prefer images to be CMYK with no embedded profiles.**



**Advanced- All fonts must be embedded! We prefer No Subsets -To preserve Transparency, Compatibility must be Acrobat 5 (PDF 1.4) or higher. \*Notice the Transparency Flattener setting is grayed out, as it won't be in use.**

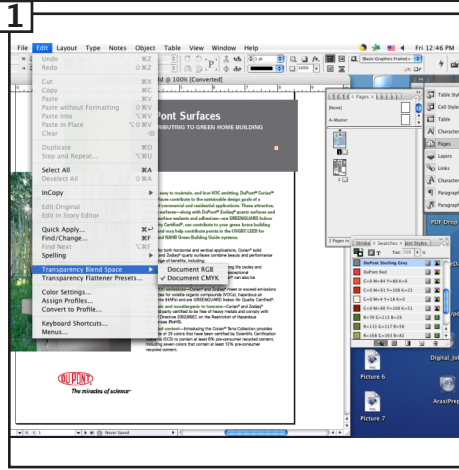


**Advanced- All fonts must be embedded; We prefer No Subsets -To flatten Transparency, Compatibility must be Acrobat 4 (PDF 1.3) or lower. \*Custom Flattener Setting- Our Specs Provided for best results.**

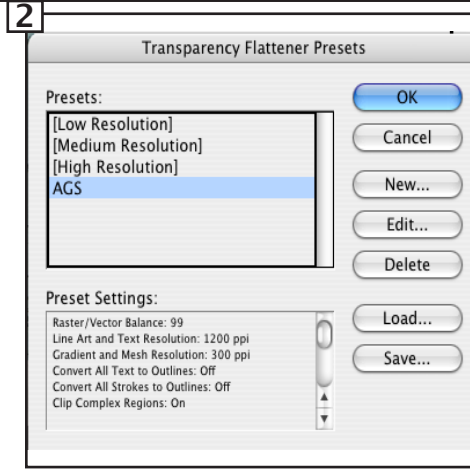


**Security- Nothing should be password protected or we may not be able to process the file.**

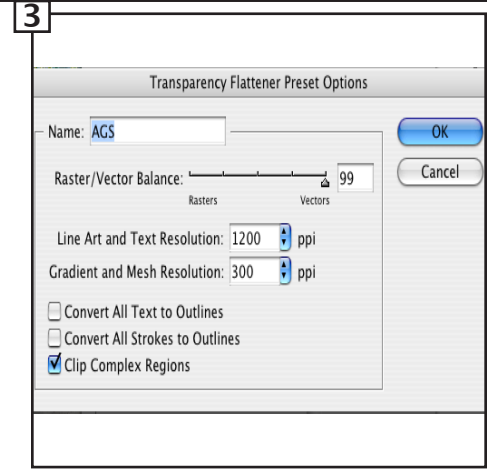
# CUSTOM FLATTENER SETTINGS



**File Menu/Edit/Transparency Blend Space  
-Choose CMYK**



**File Menu/Edit/Transparency Flattener  
Presets- Select "New"**



**Raster/Vector Balance: 99  
Line Art and Text Resolution: 1200  
Gradient and Mesh Resolution: 300  
"Clip Complex Regions" selected.**